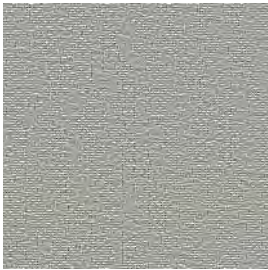


## Advanced Fabrics Coordinated

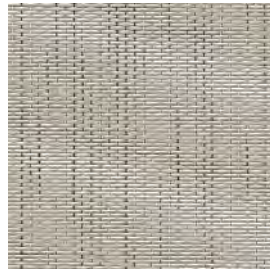
### Trigo tone



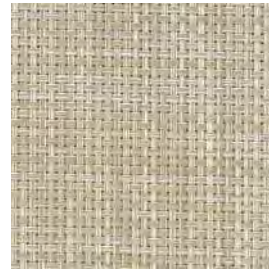
Memphis



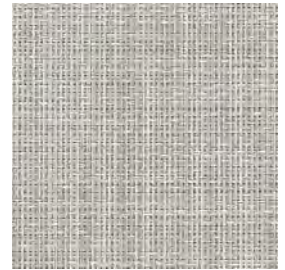
Panama



Chroma

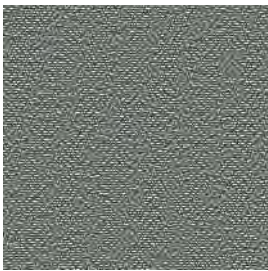


Wicker

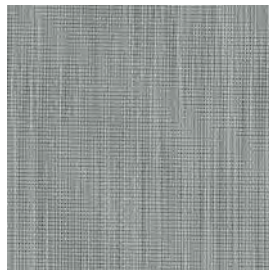


Pobo

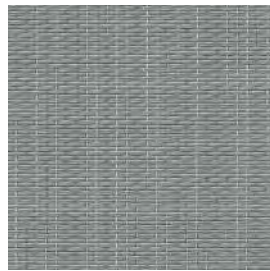
### Tortora tone



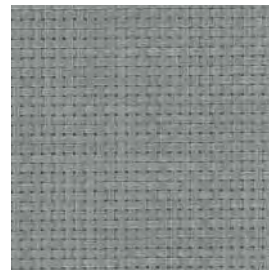
Memphis



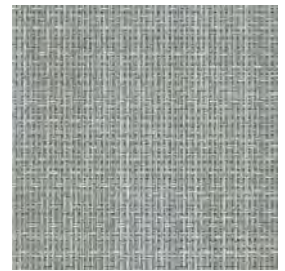
Panama



Chroma

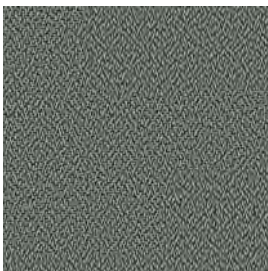


Wicker



Pobo

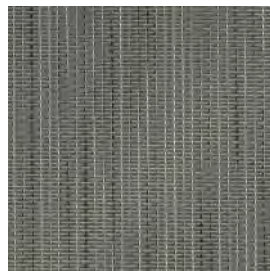
### Terroir tone



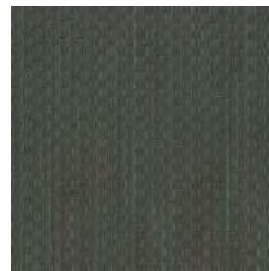
Memphis



Panama



Chroma



Wicker



Pobo

### Tarmac tone



Memphis



Panama



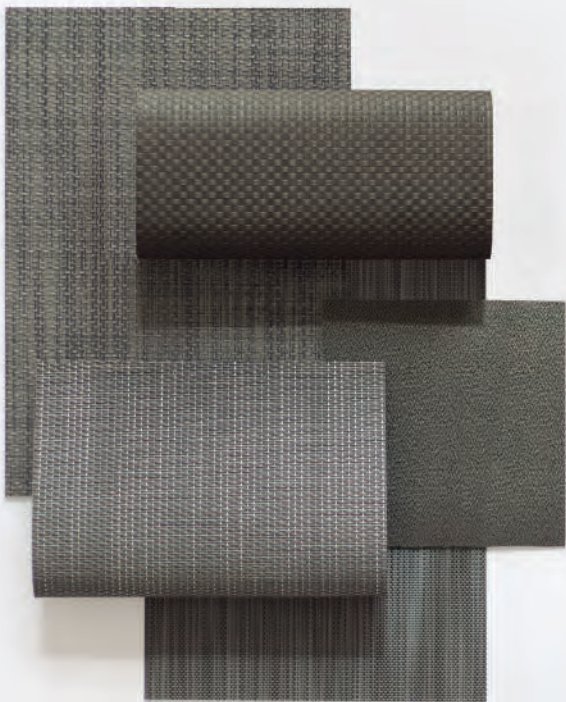
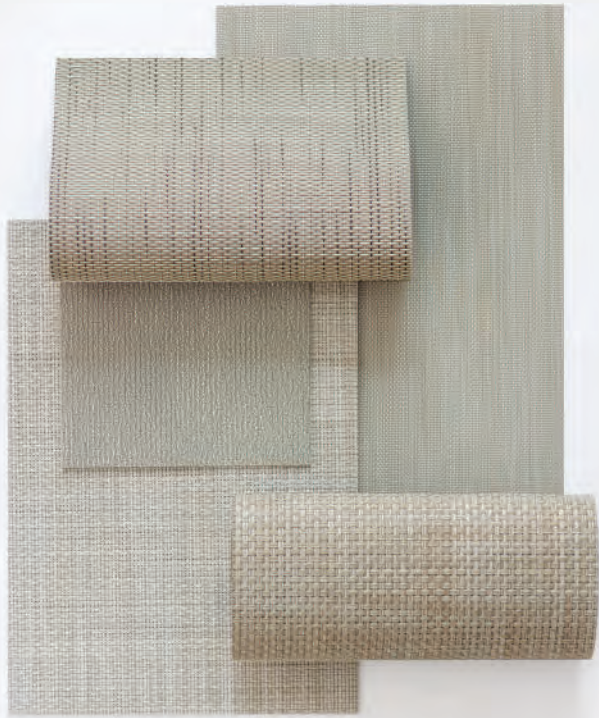
Chroma



Wicker



Pobo



# ROLLS & TILES

Technical specifications Características técnicas	Standard Norma	Panama	Chroma	Memphis	Wicker	Pobo
<b>Composition / Composición</b>	-	75% Vinyl + 25% polyester + backing 100% vinyl	91% Vinyl + 9% polyester + backing 100% vinyl	75% Vinyl + 25% polyester + backing 100% vinyl	87% Vinyl + 13% polyester + backing 100% vinyl	90% Vinyl + 10% polyester + backing 100% vinyl
<b>Weight / Peso (g/m²) (oz/sq ft)</b>	ISO 8543:1998	2900 g/m² +13% / -10% 9.5 oz/sq ft +13% / -10%	3500 g/m² +13% / -10% 10.7 oz/sq ft +13% / -10%	3100 g/m² +13% / -10% 10.2 oz/sq ft +13% / -10%	3500g/m² +13% / -10% 10.8 oz/sq ft +13% / -10%	3780g/m² +13% / -10% 11.6 oz/sq ft +13% / -10%
<b>Weight / Peso (g/m²) (oz/sq ft)</b> Raised Access Floor Tiles / Losetas autoportantes	ISO 1765:1986	4500 g/m² +13% / -10% 13.0 oz/sq ft +13% / -10%	4275 g/m² +13% / -10% 14.0 oz/sq ft +13% / -10%	4300 g/m² +13% / -10% 14.1 oz/sq ft +13% / -10%	4275 g/m² +13% / -10% 14.0 oz/sq ft +13% / -10%	4624 g/m² +13% / -10% 14.2 oz/sq ft +13% / -10%
<b>Thickness / Espesor (mm.) (in)</b>		2.25 mm 0.09 in	2.70 mm 0.11 in	2.30 mm 0.09 in	2.60 mm 0.10 in	2.80 mm 0.11 in
<b>Thickness / Espesor (mm.) (in)</b> Raised Access Floor Tiles / Losetas autoportantes		2.90 mm 0.11 in	3.35 mm 0.13 in	3.00 mm 0.12 in	3.30 mm 0.13 in	3.44 mm 0.135 in
<b>Light Fastness / Solidez a la luz (Grey scale/Escala de grises: 1-5)</b>	EN ISO 4892:2006 (exterior)	5/5 White/Blanco 4/5	5/5 White/Blanco 4/5	5/5 White/Blanco 4/5	5/5 White/Blanco 4/5	5/5 White/Blanco 4/5
<b>Light Fastness / Solidez a la luz (Blue scale/Escala de azules: 1-8)</b>	EN ISO 105B02:2001 (interior)	8/8 White/Blanco 7/8	8/8 White/Blanco 7/8	8/8 White/Blanco 7/8	8/8 White/Blanco 7/8	8/8 White/Blanco 7/8
<b>Dimensional Stability % Estabilidad dimensional %</b>	EN ISO 23999:2012	≤25%	≤0.25%	≤0.25%	≤0.25%	≤0.25%
<b>Residual Indentation Huella residual</b>	EN ISO 24343-1:2012	<0.10 mm <0.003 in	<0.30 mm <0.011 in	<0.10 mm <0.003 in	<0.10 mm <0.003 in	<0.30 mm <0.011 in
<b>Castor Chair Test Ensayo silla con ruedas.</b>	EN 985:2002	Intensive use Uso intenso	Intensive use Uso intenso	Intensive use Uso intenso	Intensive use Uso intenso	Intensive use Uso intenso
<b>Sound Insulation / Aislamiento acústico</b>	EN ISO 10140-3:2011	13 dB	14 dB	12 dB	14 dB	13 dB
<b>Sound Insulation / Aislamiento acústico</b> Raised Access Floor Tiles / Losetas autoportantes		14 dB	15 dB	13 dB	15 dB	14 dB
<b>Thermal Resistance Resistencia térmica</b>	EN 12667:2001	< 0.15 m² K/W	< 0.15 m² K/W	< 0.15 m² K/W	< 0.15 m² K/W	< 0.15 m² K/W
<b>Static Electricity Electricidad Estática</b>	EN 1815:1997	< 2 kV	< 2 kV	< 2 kV	< 2 kV	< 2 kV
<b>Slip Resistance Resistencia al deslizamiento</b>	EN 13893:2003	>0.4	>0.4	>0.35	>0.4	>0.55
<b>Slip Resistance Resistencia al deslizamiento</b>	DIN 51130:2014	R10	R9	R10	R9	R10
<b>Fire Classification Clasificación de fuego</b>	EN 13501-1:2007	BflS1	BflS1	BflS1	BflS1	BflS1
<b>Fire Classification Clasificación de fuego</b>	ASTM D2859 (2011)	Pass	Pass	Pass	Pass	In process
<b>Smoke density / Densidad de humos</b>	ASTM E662-09	Pass	Pass	Pass	Pass	Pass
<b>Volatiles emission Emisiones volátiles</b>	Floorscore	Floorscore Certified	Floorscore Certified	Floorscore Certified	Floorscore Certified	Floorscore Certified
<b>Antibacterial activity Comportamiento antibacteriano</b>	ASTM E 2180-07(2012) ASTM G21:2013	Inhibition of bacterial growth Inhibe crecimiento bacterias Antifungal activity Actividad antifúngica	Inhibition of bacterial growth Inhibe crecimiento bacterias Antifungal activity Actividad antifúngica	Inhibition of bacterial growth Inhibe crecimiento bacterias Antifungal activity Actividad antifúngica	Inhibition of bacterial growth Inhibe crecimiento bacterias Antifungal activity Actividad antifúngica	Inhibition of bacterial growth Inhibe crecimiento bacterias Antifungal activity Actividad antifúngica
<b>Roll Width / Ancho del rollo</b>	-	200 cm 78.740 in	200 cm 78.740 in	200 cm 78.740 in	200 cm 78.740 in	200 cm 78.740 in
<b>Roll Length / Largo del rollo</b>	-	10 lm 32.81 ft 20 lm 65.62 ft	10 lm 32.81 ft 20 lm 65.62 ft	10 lm 32.81 ft 20 lm 65.62 ft	10 lm 32.81 ft 20 lm 65.62 ft	10 lm 32.81 ft 20 lm 65.62 ft
<b>CE classification / Clasificación CE</b>	EN 14041:2004	0338-CPR-2002	0338-CPR-2002	0338-CPR-2002	0338-CPR-2002	0338-CPR-2002
<b>Use classification / Clasificación de uso</b>	EN 1307:2014	Heavy Commercial / Uso comercial de alto tráfico				



<b>Tile Dimensions Dimensiones</b>	Square	Plank	Diamond	Hexagon	E. Triangle	I. Triangle
	a = 50cm / 19 15/16 in	a = 75cm / 29 1/2 in b = 25cm / 9 13/16 in	a = 50cm / 19 15/16 in b = 50cm / 19 15/16 in L = 30.7cm / 12 1/4 in	a = 54cm / 21 1/4 in b = 61.4cm / 24 3/8 in	a = 50cm / 19 15/16 in	a = 50cm / 19 15/16 in z = 70.7cm / 27 15/16 in

All specifications are based on average values and may deviate. The values are for guidance and are not contractual. Subject to technical modifications. The straight weft is not an inherent condition. Weaving technology features colour effects because of light, making it an exclusive and unique product. Also bicolor yarns create a randomly harmonious effect. These effects are no ground for claims.

Todas las especificaciones están basadas en promedios y pueden variar. Los valores son una guía y no son contractuales. Están sujetos a modificaciones técnicas. La trama recta no es una condición inherente. La forma en que está tejido provoca efectos de color a casusa de la luz, convirtiéndolo en un producto único y exclusivo. Los tejidos bicolor crean un efecto armónico aleatorio. Estos efectos no son motivo de reclamación.

## vertisol

contemporary weavers

C. 17 Km. 18,920 · 08403 Granollers (Barcelona), Spain  
T. (+34) 93 840 14 44 · F. (+34) 93 849 72 19

fitnice® is a registered trademark of Vertisol Internacional SRL.

fitnice.com  
info@fitnice.com  
 fitniceflooring



FNF260418